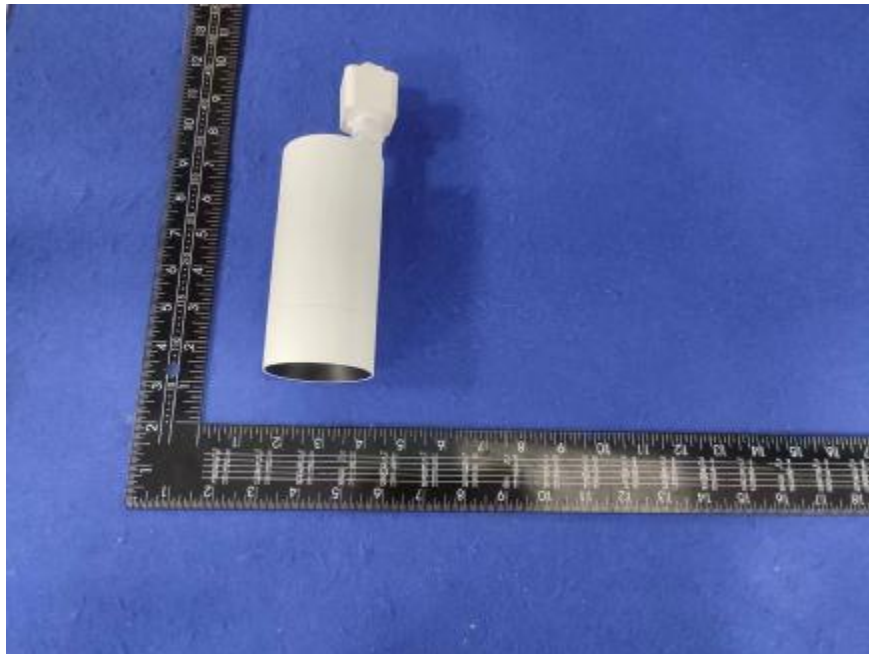


### Luminaire Photograph



|                     |         |                          |
|---------------------|---------|--------------------------|
| Light Output Ratio: | 88.4%   |                          |
| Luminaire Power:    | 20.25 W |                          |
| SHR Nominal:        | 0.75    | Calculated using the TM5 |
| SHR Maximum:        | 0.80    | fine grid method.        |

C Range: 0 - 360DEG  
C Interval: 30.0DEG  
Test Speed: HIGH  
Temperature: 25.3 °C  
Operators: zoe  
Test Date: 2023-6-13

Range: 0 - 180DEG  
Interval: 1.0DEG  
Test System: EVERFINE GO-SPEX500\_V1 SYSTEM V2.00.461  
Humidity: 65.0%  
Test Distance: 3.160m [K=1.0000]  
Remarks: LAMP: BXRE-30H1000-A-83 Ra: 97  
LENS: PM-0132C 60R  
DRIVER: TDI018NA050EF 500mA  
30minutes warm-up

## LUMINOUS INTENSITY DISTRIBUTION DIAGRAM

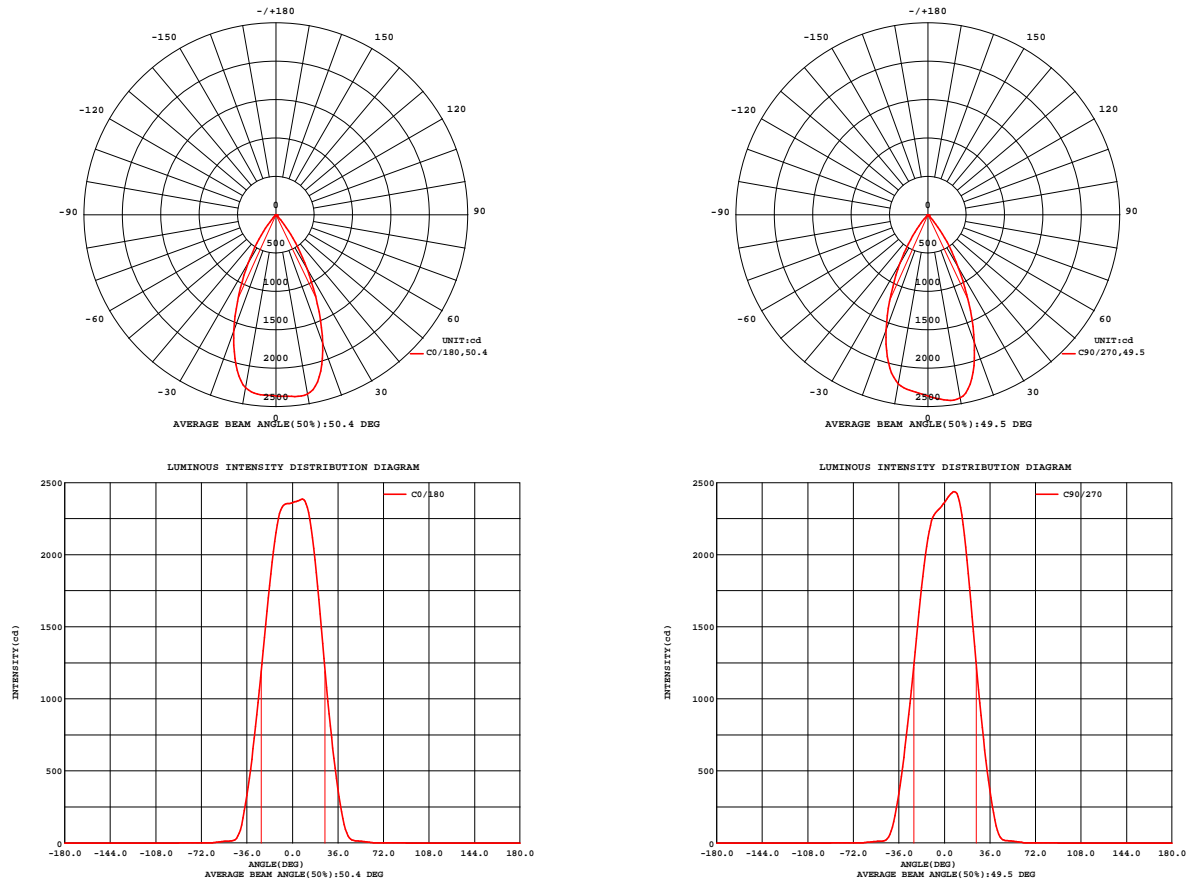


Fig. C0/C180

Fig. C90/C270

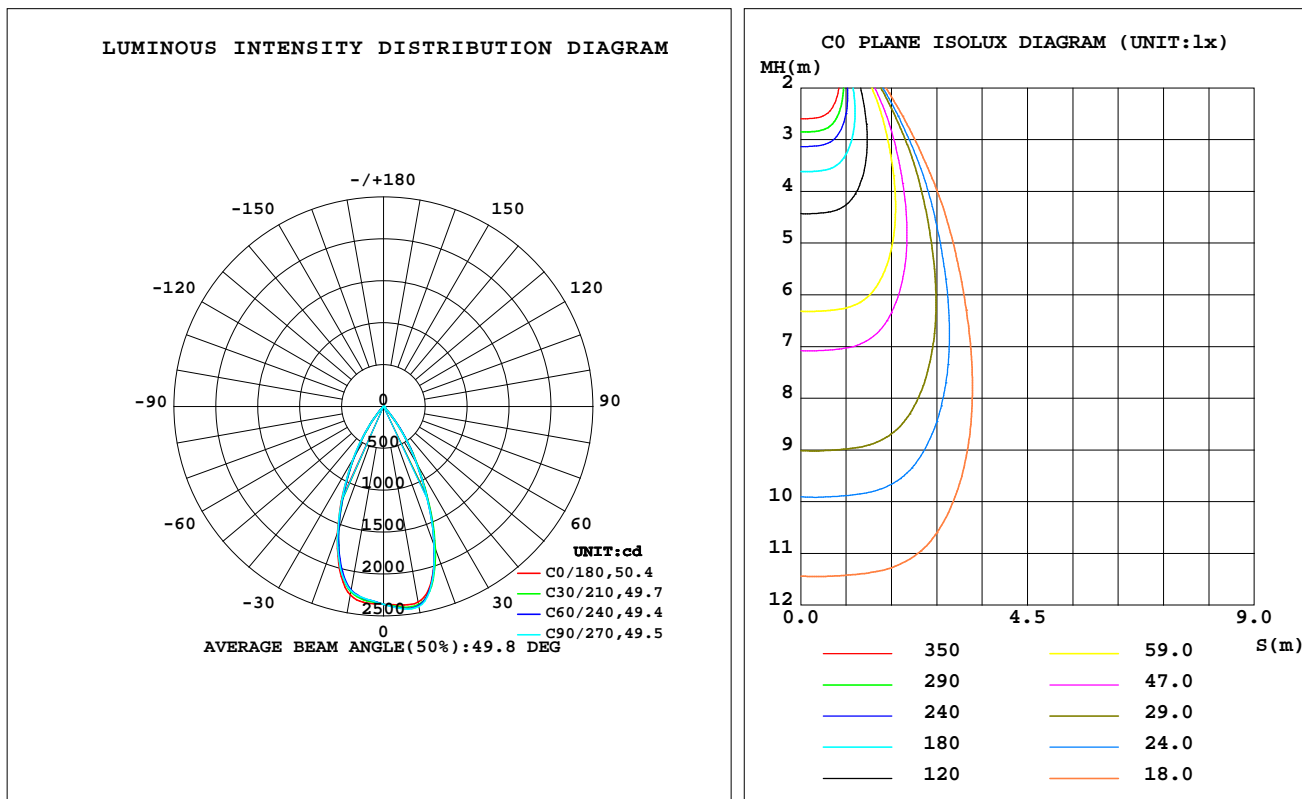
C Range: 0 - 360DEG  
C Interval: 30.0DEG  
Test Speed: HIGH  
Temperature: 25.3 °C  
Operators: zoe  
Test Date: 2023-6-13

Range: 0 - 180DEG  
Interval: 1.0DEG  
Test System: EVERFINE GO-SPEX500\_V1 SYSTEM V2.00.461  
Humidity: 65.0%  
Test Distance: 3.160m [K=1.0000]  
Remarks: LAMP: BXRE-30H1000-A-83 Ra: 97  
LENS: PM-0132C 60R  
DRIVER: TDI018NA050EF 500mA  
30minutes warm-up

## LUMINAIRE PHOTOMETRIC TEST REPORT

|  |                  |                        |
|--|------------------|------------------------|
| Test:U:120.15V I:0.1706A P:20.246W PF:0.9863 Freq:59.98Hz<br>Lamp Flux:1877.8x1 lm |                  |                        |
| NAME: 2319.201-H3AM-500  | TYPE:            | WEIGHT:                |
| SPEC.: 3000K   | DIM.:            | SERIAL No.: 2306130767 |
| MFR.: RISE   | SUR.: 0.002826m2 | Shielding Angle:       |

| DATA OF LAMP     |           | PHOTOMETRIC DATA Eff: 82.03 lm/W |        |                 |          |
|------------------|-----------|----------------------------------|--------|-----------------|----------|
| MODEL            | Brideglux | Imax(cd)                         | 2438   | S/MH(C0/180)    | 0.76     |
| NOMINAL POWER(W) | 20        | LOR(%)                           | 88.4   | S/MH(C90/270)   | 0.76     |
| RATED VOLTAGE(V) | 120       | TOTAL FLUX(lm)                   | 1660.7 | UP,DN(C0-180)   | 0.0,45.8 |
| NOMINAL FLUX(lm) | 1877.8    | CIE CLASS                        | DIRECT | UP,DN(C180-360) | 0.0,42.6 |
| LAMPS INSIDE     | 1         | up(%)                            | 0.0    | CIBSE SHR NOM   | 0.75     |
| TEST VOLTAGE(V)  | 120       | down(%)                          | 88.4   | CIBSE SHR MAX   | 0.80     |



C Range: 0 - 360DEG  
C Interval: 30.0DEG  
Test Speed: HIGH  
Temperature:25.3℃  
Operators:zoe  
Test Date:2023-6-13

Range: 0 - 180DEG  
Interval: 1.0DEG  
Test System:EVERFINE GO-SPEX500\_V1 SYSTEM V2.00.461  
Humidity:65.0%  
Test Distance:3.160m [K=1.0000]  
Remarks: LAMP:BXRE-30H1000-A-83 Ra:97  
LENS:PM-0132C 60R  
DRIVER: TDI018NA050EF 500mA  
30minutes warm-up

## ZONAL FLUX DIAGRAM

### ZONAL FLUX DIAGRAM:

|     | C0                    | C45    | C90    | C135   | C180   | C225   | C270   | C315   |         | zone    | total | %lum,lamp |
|-----|-----------------------|--------|--------|--------|--------|--------|--------|--------|---------|---------|-------|-----------|
| 10  | 2370                  | 2406   | 2422   | 2381   | 2285   | 2235   | 2234   | 2298   | 0- 10   | 224.9   | 224.9 | 13.5,12   |
| 20  | 1782                  | 1789   | 1773   | 1713   | 1609   | 1567   | 1602   | 1701   | 10- 20  | 577.5   | 802.3 | 48.3,42.7 |
| 30  | 810.6                 | 816.2  | 799.6  | 758.9  | 728.0  | 708.1  | 734.9  | 777.4  | 20- 30  | 548.9   | 1351  | 81.4,72   |
| 40  | 169.0                 | 172.6  | 160.6  | 131.7  | 125.3  | 133.0  | 146.8  | 154.3  | 30- 40  | 262.1   | 1613  | 97.1,85.9 |
| 50  | 14.71                 | 15.34  | 15.65  | 14.55  | 13.09  | 12.36  | 12.27  | 12.46  | 40- 50  | 35.54   | 1649  | 99.3,87.8 |
| 60  | 6.371                 | 6.366  | 6.174  | 5.804  | 5.439  | 5.342  | 5.521  | 5.939  | 50- 60  | 9.488   | 1658  | 99.9,88.3 |
| 70  | 0.7344                | 0.6772 | 0.6425 | 0.7159 | 0.6275 | 0.5878 | 0.7653 | 0.8313 | 60- 70  | 2.020   | 1660  | 100,88.4  |
| 80  | 0.0376                | 0.0253 | 0.0360 | 0.0260 | 0.0354 | 0.0258 | 0.0316 | 0.0223 | 70- 80  | 0.2901  | 1661  | 100,88.4  |
| 90  | 0                     | 0      | 0      | 0      | 0      | 0      | 0      | 0      | 80- 90  | 0.0254  | 1661  | 100,88.4  |
| 100 | 0                     | 0      | 0      | 0      | 0      | 0      | 0      | 0      | 90-100  | 0       | 1661  | 100,88.4  |
| 110 | 0                     | 0      | 0      | 0      | 0      | 0      | 0      | 0      | 100-110 | 0       | 1661  | 100,88.4  |
| 120 | 0                     | 0      | 0      | 0      | 0      | 0      | 0      | 0      | 110-120 | 0       | 1661  | 100,88.4  |
| 130 | 0                     | 0      | 0      | 0      | 0      | 0      | 0      | 0      | 120-130 | 0       | 1661  | 100,88.4  |
| 140 | 0                     | 0      | 0      | 0      | 0      | 0      | 0      | 0      | 130-140 | 0       | 1661  | 100,88.4  |
| 150 | 0                     | 0      | 0      | 0      | 0      | 0      | 0      | 0      | 140-150 | 0       | 1661  | 100,88.4  |
| 160 | 0                     | 0      | 0      | 0      | 0      | 0      | 0      | 0      | 150-160 | 0       | 1661  | 100,88.4  |
| 170 | 0                     | 0      | 0      | 0      | 0      | 0      | 0      | 0      | 160-170 | 0       | 1661  | 100,88.4  |
| 180 | 0                     | 0      | 0      | 0      | 0      | 0      | 0      | 0      | 170-180 | 0       | 1661  | 100,88.4  |
| DEG | LUMINOUS INTENSITY:cd |        |        |        |        |        |        |        |         | UNIT:lm |       |           |

C Range: 0 - 360DEG  
C Interval: 30.0DEG  
Test Speed: HIGH  
Temperature:25.3℃  
Operators:zoe  
Test Date:2023-6-13

Range: 0 - 180DEG  
Interval: 1.0DEG  
Test System:EVERFINE GO-SPEX500\_V1 SYSTEM V2.00.461  
Humidity:65.0%  
Test Distance:3.160m [K=1.0000]  
Remarks: LAMP:BXRE-30H1000-A-83 Ra:97  
LENS:PM-0132C 60R  
DRIVER: TDI018NA050EF 500mA  
30minutes warm-up

## LUMINANCE LIMITATION CURVES

Test:U:120.15V I:0.1706A P:20.246W PF:0.9863 Freq:59.98Hz  
Lamp Flux:1877.8x1 lm

NAME: 2319.201-H3AM-500

TYPE:

WEIGHT:

SPEC.: 3000K

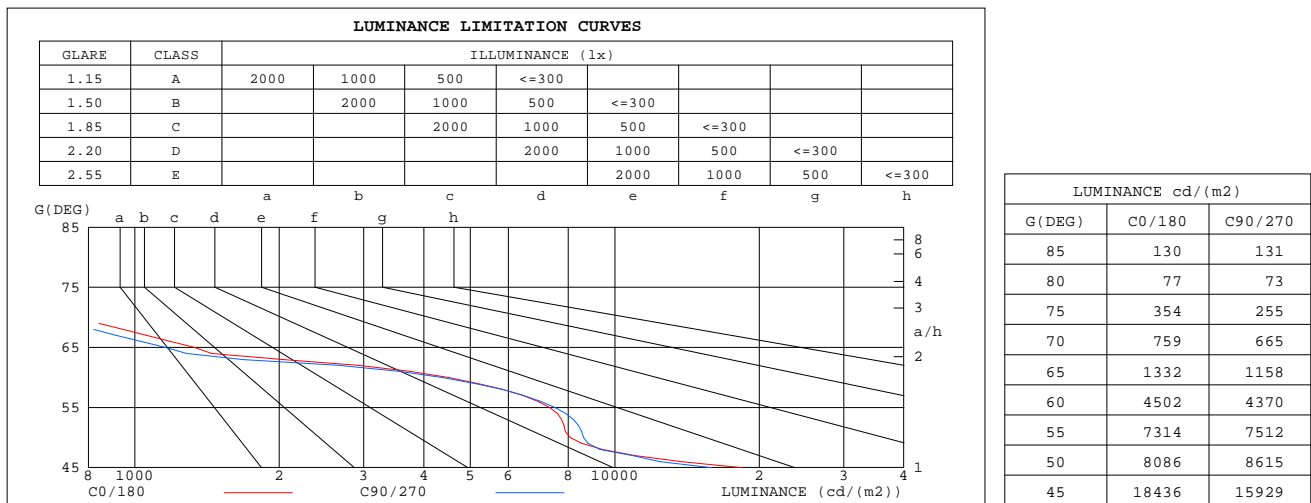
DIM.:

SERIAL No.: 2306130767

MFR.: RISE

SUR.: 0.002826m2

Shielding Angle:



C Range: 0 - 360DEG  
C Interval: 30.0DEG  
Test Speed: HIGH  
Temperature:25.3℃  
Operators:zoe  
Test Date:2023-6-13

Range: 0 - 180DEG  
Interval: 1.0DEG  
Test System:EVERFINE GO-SPEX500\_V1 SYSTEM V2.00.461  
Humidity:65.0%  
Test Distance:3.160m [K=1.0000]  
Remarks: LAMP:BXRE-30H1000-A-83 Ra:97  
LENS:PM-0132C 60R  
DRIVER: TDI018NA050EF 500mA  
30minutes warm-up

## CU AND LUMINAIRE BUDGETARY ESTIMATE DIAGRAM

Test:U:120.15V I:0.1706A P:20.246W PF:0.9863 Freq:59.98Hz  
Lamp Flux:1877.8x1 lm

NAME: 2319.201-H3AM-500

TYPE:

WEIGHT:

SPEC.: 3000K

DIM.:

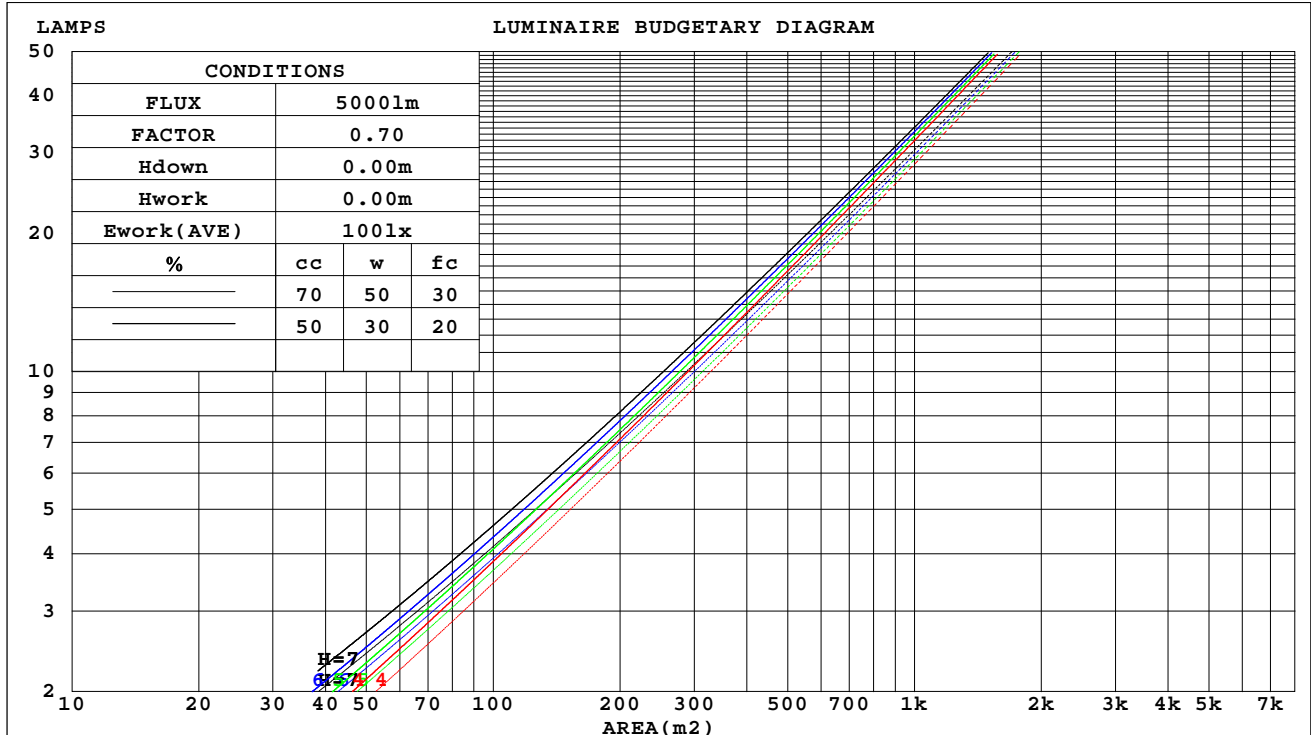
SERIAL No.: 2306130767

MFR.: RISE

SUR.: 0.002826m2

Shielding Angle:

| cc  | 80%                   |     |     | 70% |     |     | 50% |     |     | 30% |     |     | 10% |     |     | 0 |
|-----|-----------------------|-----|-----|-----|-----|-----|-----|-----|-----|-----|-----|-----|-----|-----|-----|---|
| w   | 50%                   | 30% | 10% | 50% | 30% | 10% | 50% | 30% | 10% | 50% | 30% | 10% | 50% | 30% | 10% | 0 |
| fc  | 20%                   |     |     | 20% |     |     | 20% |     |     | 20% |     |     | 20% |     |     | 0 |
| RCR | RCR:Room Cavity Ratio |     |     |     |     |     |     |     |     |     |     |     |     |     |     |   |



C Range: 0 - 360DEG  
C Interval: 30.0DEG  
Test Speed: HIGH  
Temperature:25.3℃  
Operators:zoe  
Test Date:2023-6-13

Range: 0 - 180DEG  
Interval: 1.0DEG  
Test System:EVERFINE GO-SPEX500\_V1 SYSTEM V2.00.461  
Humidity:65.0%  
Test Distance:3.160m [K=1.0000]  
Remarks: LAMP:BXRE-30H1000-A-83 Ra:97  
LENS:PM-0132C 60R  
DRIVER: TDI018NA050EF 500mA  
30minutes warm-up

### WEC AND CCEC

|  |                  |                        |
|--|------------------|------------------------|
| Test:U:120.15V I:0.1706A P:20.246W PF:0.9863 Freq:59.98Hz<br>Lamp Flux:1877.8x1 lm |                  |                        |
| NAME: 2319.201-H3AM-500  | TYPE:            | WEIGHT:                |
| SPEC.: 3000K   | DIM.:            | SERIAL No.: 2306130767 |
| MFR.: RISE   | SUR.: 0.002826m2 | Shielding Angle:       |

| cc   | 80%                   |      |      | 70%  |      |      | 50%                             |      |      | 30%  |      |      | 10%  |      |      | 0 |  |
|------|-----------------------|------|------|------|------|------|---------------------------------|------|------|------|------|------|------|------|------|---|--|
| w    | 50%                   | 30%  | 10%  | 50%  | 30%  | 10%  | 50%                             | 30%  | 10%  | 50%  | 30%  | 10%  | 50%  | 30%  | 10%  | 0 |  |
| fc   | 20%                   |      |      | 20%  |      |      | 20%                             |      |      | 20%  |      |      | 20%  |      |      | 0 |  |
| RCR  | RCR:Room Cavity Ratio |      |      |      |      |      | Wall Exitance Coefficients(WEC) |      |      |      |      |      |      |      |      |   |  |
| 0.0  |                       |      |      |      |      |      |                                 |      |      |      |      |      |      |      |      |   |  |
| 1.0  | .146                  | .083 | .026 | .140 | .080 | .025 | .129                            | .074 | .024 | .119 | .069 | .022 | .110 | .064 | .021 |   |  |
| 2.0  | .139                  | .076 | .023 | .134 | .074 | .023 | .125                            | .070 | .022 | .116 | .065 | .020 | .109 | .061 | .019 |   |  |
| 3.0  | .132                  | .070 | .021 | .128 | .069 | .021 | .120                            | .065 | .020 | .113 | .062 | .019 | .106 | .059 | .018 |   |  |
| 4.0  | .126                  | .065 | .019 | .122 | .064 | .019 | .116                            | .061 | .018 | .109 | .059 | .018 | .103 | .056 | .017 |   |  |
| 5.0  | .120                  | .061 | .018 | .117 | .060 | .017 | .111                            | .058 | .017 | .106 | .056 | .017 | .100 | .054 | .016 |   |  |
| 6.0  | .115                  | .057 | .016 | .112 | .057 | .016 | .107                            | .055 | .016 | .102 | .053 | .016 | .097 | .051 | .015 |   |  |
| 7.0  | .110                  | .054 | .015 | .107 | .053 | .015 | .103                            | .052 | .015 | .099 | .051 | .015 | .095 | .049 | .014 |   |  |
| 8.0  | .105                  | .051 | .014 | .103 | .051 | .014 | .099                            | .049 | .014 | .095 | .048 | .014 | .092 | .047 | .014 |   |  |
| 9.0  | .101                  | .049 | .014 | .099 | .048 | .014 | .095                            | .047 | .013 | .092 | .046 | .013 | .089 | .045 | .013 |   |  |
| 10.0 | .097                  | .047 | .013 | .095 | .046 | .013 | .092                            | .045 | .013 | .089 | .044 | .013 | .086 | .043 | .012 |   |  |

| cc   | 80%                   |      |      | 70%  |      |      | 50%  |      |      | 30%  |      |      | 10%  |      |      | 0 |
|------|-----------------------|------|------|--|------|------|------|------|------|------|------|------|------|------|------|---|
| w    | 50%                   | 30%  | 10%  | 50%  | 30%  | 10%  | 50%  | 30%  | 10%  | 50%  | 30%  | 10%  | 50%  | 30%  | 10%  | 0 |
| fc   | 20%                   |      |      | 20%  |      |      | 20%  |      |      | 20%  |      |      | 20%  |      |      | 0 |
| RcR  | RcR:Room Cavity Ratio |      |      | Ceiling Cavity Exitance Coefficients(CCEC) |      |      |      |      |      |      |      |      |      |      |      |   |
| 0.0  | .168                  | .168 | .168 | .144                                       | .144 | .144 | .098 | .098 | .098 | .056 | .056 | .056 | .018 | .018 | .018 |   |
| 1.0  | .151                  | .139 | .129 | .129                                       | .119 | .111 | .088 | .082 | .077 | .051 | .048 | .045 | .016 | .015 | .014 |   |
| 2.0  | .136                  | .117 | .101 | .117                                       | .101 | .087 | .080 | .070 | .061 | .046 | .041 | .036 | .015 | .013 | .012 |   |
| 3.0  | .125                  | .100 | .081 | .107                                       | .087 | .070 | .074 | .060 | .049 | .042 | .035 | .029 | .014 | .011 | .009 |   |
| 4.0  | .115                  | .087 | .066 | .099                                       | .075 | .057 | .068 | .053 | .040 | .039 | .031 | .024 | .013 | .010 | .008 |   |
| 5.0  | .107                  | .077 | .054 | .092                                       | .066 | .047 | .064 | .046 | .033 | .037 | .027 | .020 | .012 | .009 | .007 |   |
| 6.0  | .101                  | .068 | .045 | .086                                       | .059 | .039 | .060 | .041 | .028 | .035 | .024 | .017 | .011 | .008 | .005 |   |
| 7.0  | .095                  | .062 | .038 | .082                                       | .053 | .033 | .056 | .037 | .024 | .033 | .022 | .014 | .011 | .007 | .005 |   |
| 8.0  | .090                  | .056 | .033 | .077                                       | .049 | .029 | .053 | .034 | .020 | .031 | .020 | .012 | .010 | .007 | .004 |   |
| 9.0  | .085                  | .051 | .029 | .073                                       | .045 | .025 | .051 | .031 | .018 | .030 | .019 | .011 | .010 | .006 | .003 |   |
| 10.0 | .081                  | .047 | .025 | .070                                       | .041 | .022 | .049 | .029 | .015 | .028 | .017 | .009 | .009 | .006 | .003 |   |

C Range: 0 - 360DEG  
C Interval: 30.0DEG  
Test Speed: HIGH  
Temperature:25.3℃  
Operators:zoe  
Test Date:2023-6-13

Range: 0 - 180DEG  
Interval: 1.0DEG  
Test System:EVERFINE GO-SPEX500\_V1 SYSTEM V2.00.461  
Humidity:65.0%  
Test Distance:3.160m [K=1.0000]  
Remarks: LAMP:BXRE-30H1000-A-83 Ra:97  
LENS:PM-0132C 60R  
DRIVER: TDI018NA050EF 500mA  
30minutes warm-up

## UGR(Unified Glare Rating) Table

|  |                  |      |      |      |                  |                |      |                        |      |      |
|--|------------------|------|------|------|------------------|----------------|------|------------------------|------|------|
| Test:U:120.15V I:0.1706A P:20.246W PF:0.9863 Freq:59.98Hz<br>Lamp Flux:1877.8x1 lm |                  |      |      |      |                  |                |      |                        |      |      |
| NAME: 2319.201-H3AM-500  |                  |      |      |      | TYPE:            |                |      | WEIGHT:                |      |      |
| SPEC.: 3000K   |                  |      |      |      | DIM.:            |                |      | SERIAL No.: 2306130767 |      |      |
| MFR.: RISE   |                  |      |      |      | SUR.: 0.002826m2 |                |      | Shielding Angle:       |      |      |
| ceiling/cavity   | 0.7              | 0.7  | 0.5  | 0.5  | 0.3              | 0.7            | 0.7  | 0.5                    | 0.5  | 0.3  |
| walls  | 0.5              | 0.3  | 0.5  | 0.3  | 0.3              | 0.5            | 0.3  | 0.5                    | 0.3  | 0.3  |
| working plane  | 0.2              | 0.2  | 0.2  | 0.2  | 0.2              | 0.2            | 0.2  | 0.2                    | 0.2  | 0.2  |
| Room dimensions  | Viewed crosswise |      |      |      |                  | Viewed endwise |      |                        |      |      |
| x = 2H y = 2H  | 18.6             | 19.5 | 18.9 | 19.7 | 19.8             | 18.5           | 19.3 | 18.7                   | 19.5 | 19.7 |
| 3H   | 18.5             | 19.3 | 18.7 | 19.5 | 19.7             | 18.3           | 19.1 | 18.6                   | 19.3 | 19.5 |
| 4H   | 18.4             | 19.1 | 18.7 | 19.4 | 19.6             | 18.2           | 19.0 | 18.5                   | 19.2 | 19.4 |
| 6H   | 18.3             | 19.0 | 18.6 | 19.2 | 19.5             | 18.1           | 18.8 | 18.4                   | 19.1 | 19.3 |
| 8H   | 18.3             | 18.9 | 18.6 | 19.2 | 19.4             | 18.1           | 18.8 | 18.4                   | 19.0 | 19.3 |
| 12H  | 18.2             | 18.9 | 18.5 | 19.1 | 19.4             | 18.0           | 18.7 | 18.4                   | 19.0 | 19.2 |
| 4H 2H  | 18.4             | 19.1 | 18.7 | 19.4 | 19.6             | 18.2           | 19.0 | 18.5                   | 19.2 | 19.4 |
| 3H   | 18.2             | 18.9 | 18.5 | 19.1 | 19.4             | 18.1           | 18.7 | 18.4                   | 19.0 | 19.2 |
| 4H   | 18.1             | 18.7 | 18.5 | 19.0 | 19.3             | 18.0           | 18.6 | 18.3                   | 18.8 | 19.2 |
| 6H   | 18.0             | 18.5 | 18.4 | 18.9 | 19.2             | 17.9           | 18.4 | 18.2                   | 18.7 | 19.1 |
| 8H   | 18.0             | 18.5 | 18.4 | 18.8 | 19.2             | 17.8           | 18.3 | 18.2                   | 18.6 | 19.0 |
| 12H  | 17.9             | 18.4 | 18.3 | 18.7 | 19.1             | 17.8           | 18.2 | 18.2                   | 18.6 | 19.0 |
| 8H 4H  | 18.0             | 18.5 | 18.4 | 18.8 | 19.2             | 17.8           | 18.3 | 18.2                   | 18.6 | 19.0 |
| 6H   | 17.9             | 18.3 | 18.3 | 18.7 | 19.1             | 17.7           | 18.1 | 18.1                   | 18.5 | 18.9 |
| 8H   | 17.8             | 18.2 | 18.3 | 18.6 | 19.0             | 17.6           | 18.0 | 18.1                   | 18.4 | 18.9 |
| 12H  | 17.8             | 18.1 | 18.2 | 18.5 | 19.0             | 17.6           | 17.9 | 18.1                   | 18.3 | 18.8 |
| 12H 4H   | 17.9             | 18.4 | 18.3 | 18.7 | 19.1             | 17.8           | 18.2 | 18.2                   | 18.6 | 19.0 |
| 6H   | 17.8             | 18.2 | 18.3 | 18.6 | 19.0             | 17.6           | 18.0 | 18.1                   | 18.4 | 18.9 |
| 8H   | 17.8             | 18.1 | 18.2 | 18.5 | 19.0             | 17.6           | 17.9 | 18.1                   | 18.3 | 18.8 |
| Variations with the observer position at spacings(CIE Pub.117):                    |                  |      |      |      |                  |                |      |                        |      |      |
| S = 1.0H   | + 3.9 / -13.0    |      |      |      |                  | + 3.9 / -12.9  |      |                        |      |      |
| 1.5H   | + 6.5 / -10.8    |      |      |      |                  | + 6.6 / -10.1  |      |                        |      |      |
| 2.0H   | + 5.2 / - 9.7    |      |      |      |                  | + 4.4 / - 9.9  |      |                        |      |      |

CIE Pub.117, 1878 lm Total Lamp Luminous Flux Correct (8log(F/F0) = 2.2)  
Area: 0.002826 m2

C Range: 0 - 360DEG  
C Interval: 30.0DEG  
Test Speed: HIGH  
Temperature:25.3℃  
Operators:zoe  
Test Date:2023-6-13

Range: 0 - 180DEG  
Interval: 1.0DEG  
Test System:EVERFINE GO-SPEX500\_V1 SYSTEM V2.00.461  
Humidity:65.0%  
Test Distance:3.160m [K=1.0000]  
Remarks: LAMP:BXRE-30H1000-A-83 Ra:97  
LENS:PM-0132C 60R  
DRIVER: TDI018NA050EF 500mA  
30minutes warm-up



### UTILIZATION FACTORS TABLE

|  |                  |                        |
|--|------------------|------------------------|
| Test:U:120.15V I:0.1706A P:20.246W PF:0.9863 Freq:59.98Hz<br>Lamp Flux:1877.8x1 lm |                  |                        |
| NAME: 2319.201-H3AM-500  | TYPE:            | WEIGHT:                |
| SPEC.: 3000K   | DIM.:            | SERIAL No.: 2306130767 |
| MFR.: RISE   | SUR.: 0.002826m2 | Shielding Angle:       |

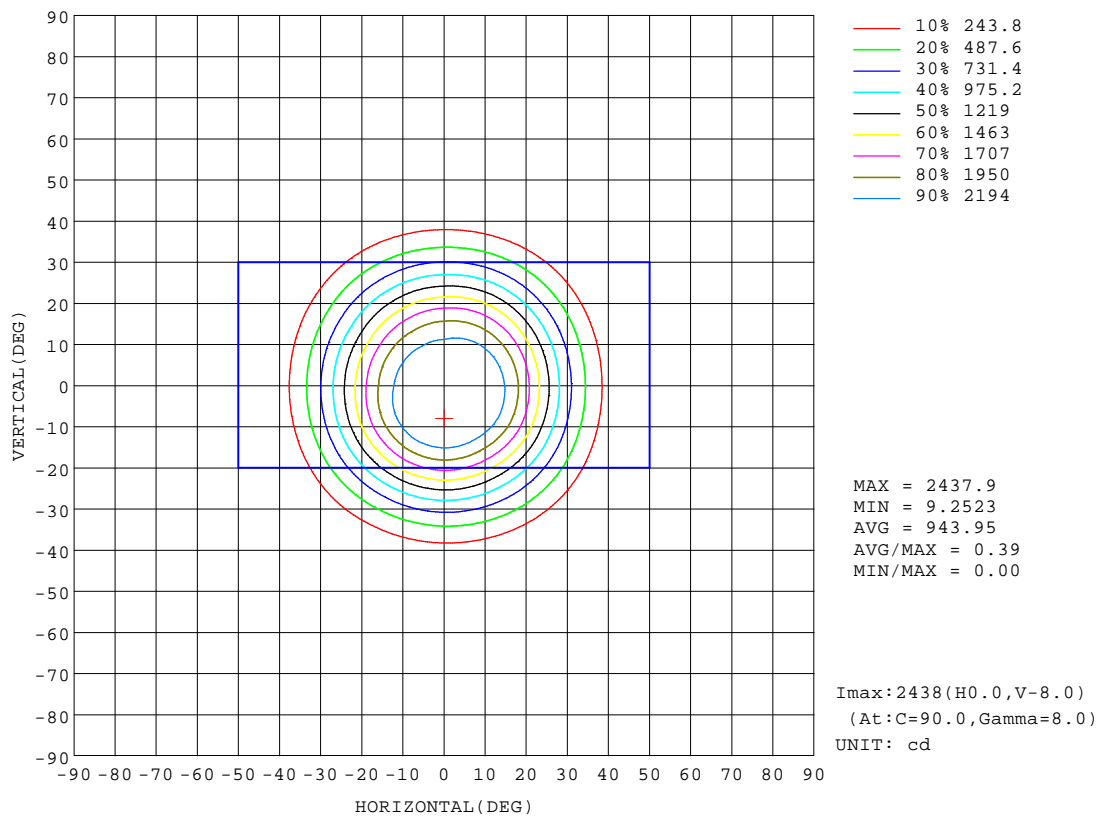
| REFLECTANCE                      |   |     |           |     |     |     |     |               |     |        |
|----------------------------------|---|-----|-----------|-----|-----|-----|-----|---------------|-----|--------|
| Ceiling                          | 0.8   | 0.8 | 0.8       | 0.7 | 0.7 | 0.7 | 0.5 | 0.5           | 0.5 | 0      |
| Walls                            | 0.7   | 0.5 | 0.3       | 0.7 | 0.5 | 0.3 | 0.7 | 0.5           | 0.3 | 0      |
| Working plane                    | 0.2   | 0.2 | 0.2       | 0.2 | 0.2 | 0.2 | 0.2 | 0.2           | 0.2 | 0      |
| ROOM INDEX                       | UTILIZATION FACTORS(PERCENT) $k(RI) \times RCR = 5$ |     |           |     |     |     |     |               |     |        |
| k = 0.60                         | 79  | 74  | 71        | 79  | 74  | 71  | 78  | 74            | 71  | 68     |
| 0.80                             | 86  | 81  | 78        | 85  | 81  | 78  | 84  | 80            | 77  | 74     |
| 1.00                             | 89  | 85  | 82        | 89  | 84  | 81  | 87  | 84            | 81  | 78     |
| 1.25                             | 93  | 88  | 85        | 92  | 88  | 85  | 90  | 87            | 84  | 81     |
| 1.50                             | 95  | 91  | 88        | 94  | 90  | 88  | 92  | 89            | 87  | 83     |
| 2.00                             | 97  | 93  | 91        | 96  | 92  | 90  | 93  | 91            | 89  | 84     |
| 2.50                             | 98  | 95  | 93        | 97  | 94  | 92  | 94  | 92            | 90  | 85     |
| 3.00                             | 99  | 97  | 94        | 98  | 95  | 93  | 95  | 93            | 91  | 86     |
| 4.00                             | 101   | 99  | 97        | 99  | 97  | 96  | 96  | 95            | 93  | 87     |
| 5.00                             | 102   | 100 | 99        | 100 | 99  | 97  | 97  | 96            | 95  | 88     |
| ROOM INDEX                       | UF(total)   |     |           |     |     |     |     |               |     | Direct |
| According to DIN EN 13032-2 2004 |   |     | Suspended |     |     |     |     | SHRNOM = 1.25 |     |        |

C Range: 0 - 360DEG  
C Interval: 30.0DEG  
Test Speed: HIGH  
Temperature:25.3℃  
Operators:zoe  
Test Date:2023-6-13

Range: 0 - 180DEG  
Interval: 1.0DEG  
Test System:EVERFINE GO-SPEX500\_V1 SYSTEM V2.00.461  
Humidity:65.0%  
Test Distance:3.160m [K=1.0000]  
Remarks: LAMP:BXRE-30H1000-A-83 Ra:97  
LENS:PM-0132C 60R  
DRIVER: TDI018NA050EF 500mA  
30minutes warm-up

## ISOCANDELA DIAGRAM

|  |                  |                        |
|--|------------------|------------------------|
| Test:U:120.15V I:0.1706A P:20.246W PF:0.9863 Freq:59.98Hz<br>Lamp Flux:1877.8x1 lm |                  |                        |
| NAME: 2319.201-H3AM-500  | TYPE:            | WEIGHT:                |
| SPEC.: 3000K   | DIM.:            | SERIAL No.: 2306130767 |
| MFR.: RISE   | SUR.: 0.002826m2 | Shielding Angle:       |

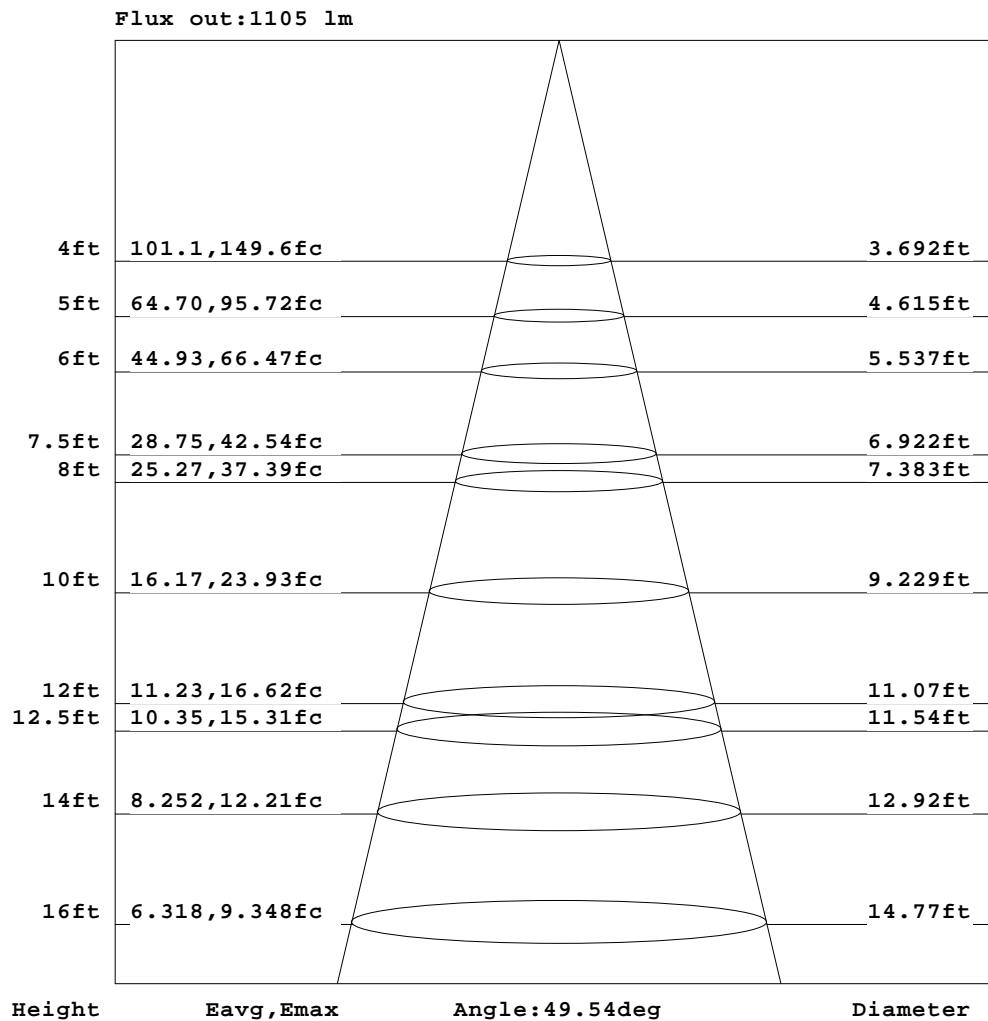


C Range: 0 - 360DEG  
C Interval: 30.0DEG  
Test Speed: HIGH  
Temperature:25.3℃  
Operators:zoe  
Test Date:2023-6-13

Range: 0 - 180DEG  
Interval: 1.0DEG  
Test System:EVERFINE GO-SPEX500\_V1 SYSTEM V2.00.461  
Humidity:65.0%  
Test Distance:3.160m [K=1.0000]  
Remarks: LAMP:BXRE-30H1000-A-83 Ra:97  
LENS:PM-0132C 60R  
DRIVER: TDI018NA050EF 500mA  
30minutes warm-up

## AAI Figure

|  |                  |                        |
|--|------------------|------------------------|
| Test:U:120.15V I:0.1706A P:20.246W PF:0.9863 Freq:59.98Hz<br>Lamp Flux:1877.8x1 lm |                  |                        |
| NAME: 2319.201-H3AM-500  | TYPE:            | WEIGHT:                |
| SPEC.: 3000K   | DIM.:            | SERIAL No.: 2306130767 |
| MFR.: RISE   | SUR.: 0.002826m2 | Shielding Angle:       |



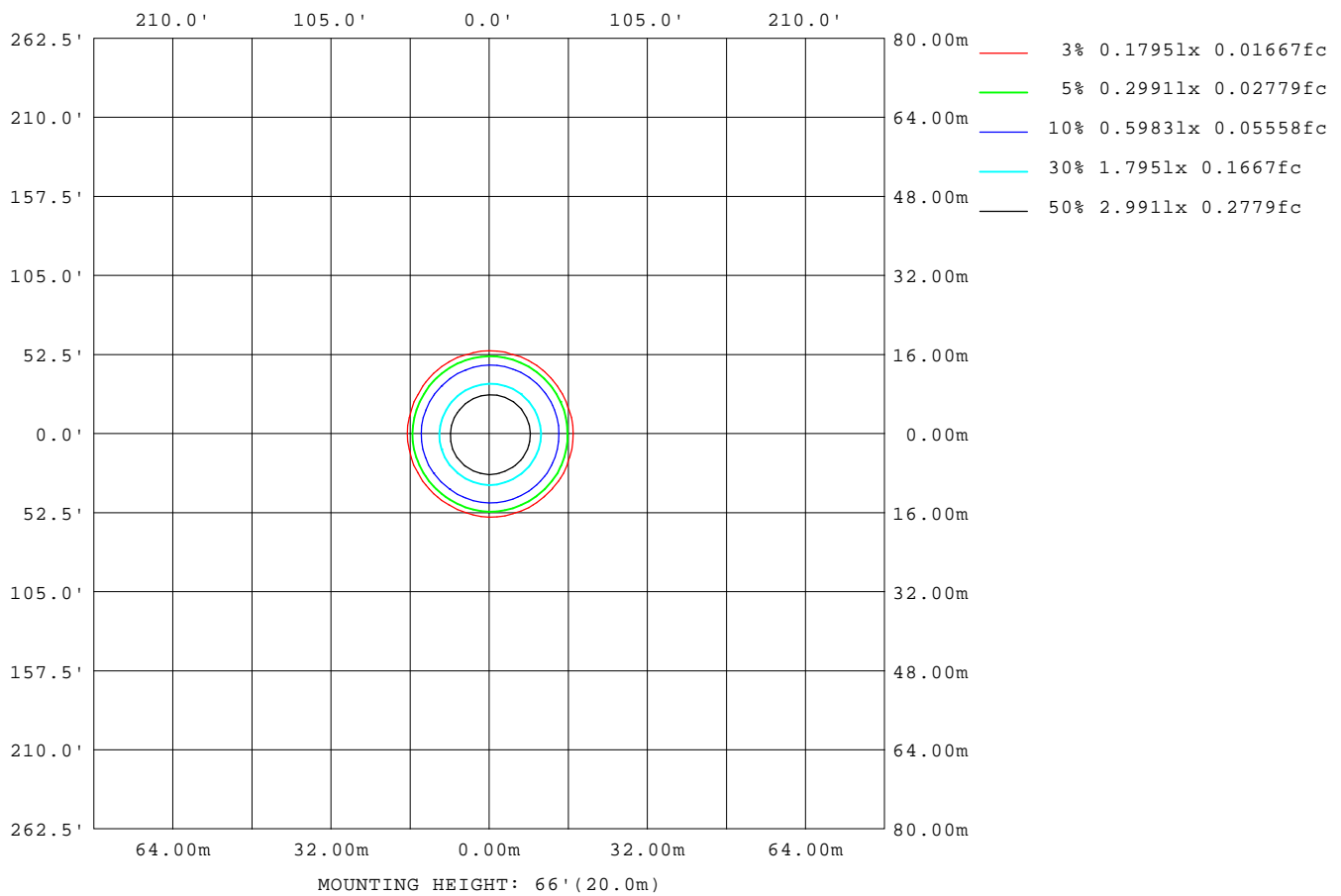
Note: The Curves indicate the illuminated area and the average illumination when the luminaire is at different distance.

C Range: 0 - 360DEG  
C Interval: 30.0DEG  
Test Speed: HIGH  
Temperature: 25.3 °C  
Operators: zoe  
Test Date: 2023-6-13

Range: 0 - 180DEG  
Interval: 1.0DEG  
Test System: EVERFINE GO-SPEX500\_V1 SYSTEM V2.00.461  
Humidity: 65.0%  
Test Distance: 3.160m [K=1.0000]  
Remarks: LAMP: BXRE-30H1000-A-83 Ra: 97  
LENS: PM-0132C 60R  
DRIVER: TDI018NA050EF 500mA  
30minutes warm-up

## ISOLUX DIAGRAM

|  |                  |                        |
|--|------------------|------------------------|
| Test:U:120.15V I:0.1706A P:20.246W PF:0.9863 Freq:59.98Hz<br>Lamp Flux:1877.8x1 lm |                  |                        |
| NAME: 2319.201-H3AM-500  | TYPE:            | WEIGHT:                |
| SPEC.: 3000K   | DIM.:            | SERIAL No.: 2306130767 |
| MFR.: RISE   | SUR.: 0.002826m2 | Shielding Angle:       |



C Range: 0 - 360DEG  
C Interval: 30.0DEG  
Test Speed: HIGH  
Temperature:25.3°C  
Operators:zoe  
Test Date:2023-6-13

Range: 0 - 180DEG  
Interval: 1.0DEG  
Test System:EVERFINE GO-SPEX500\_V1 SYSTEM V2.00.461  
Humidity:65.0%  
Test Distance:3.160m [K=1.0000]  
Remarks: LAMP:BXRE-30H1000-A-83 Ra:97  
LENS:PM-0132C 60R  
DRIVER: TDI018NA050EF 500mA  
30minutes warm-up

## LED Avg.L Report

|  |                  |                        |
|--|------------------|------------------------|
| Test:U:120.15V I:0.1706A P:20.246W PF:0.9863 Freq:59.98Hz<br>Lamp Flux:1877.8x1 lm |                  |                        |
| NAME: 2319.201-H3AM-500  | TYPE:            | WEIGHT:                |
| SPEC.: 3000K   | DIM.:            | SERIAL No.: 2306130767 |
| MFR.: RISE   | SUR.: 0.002826m2 | Shielding Angle:       |

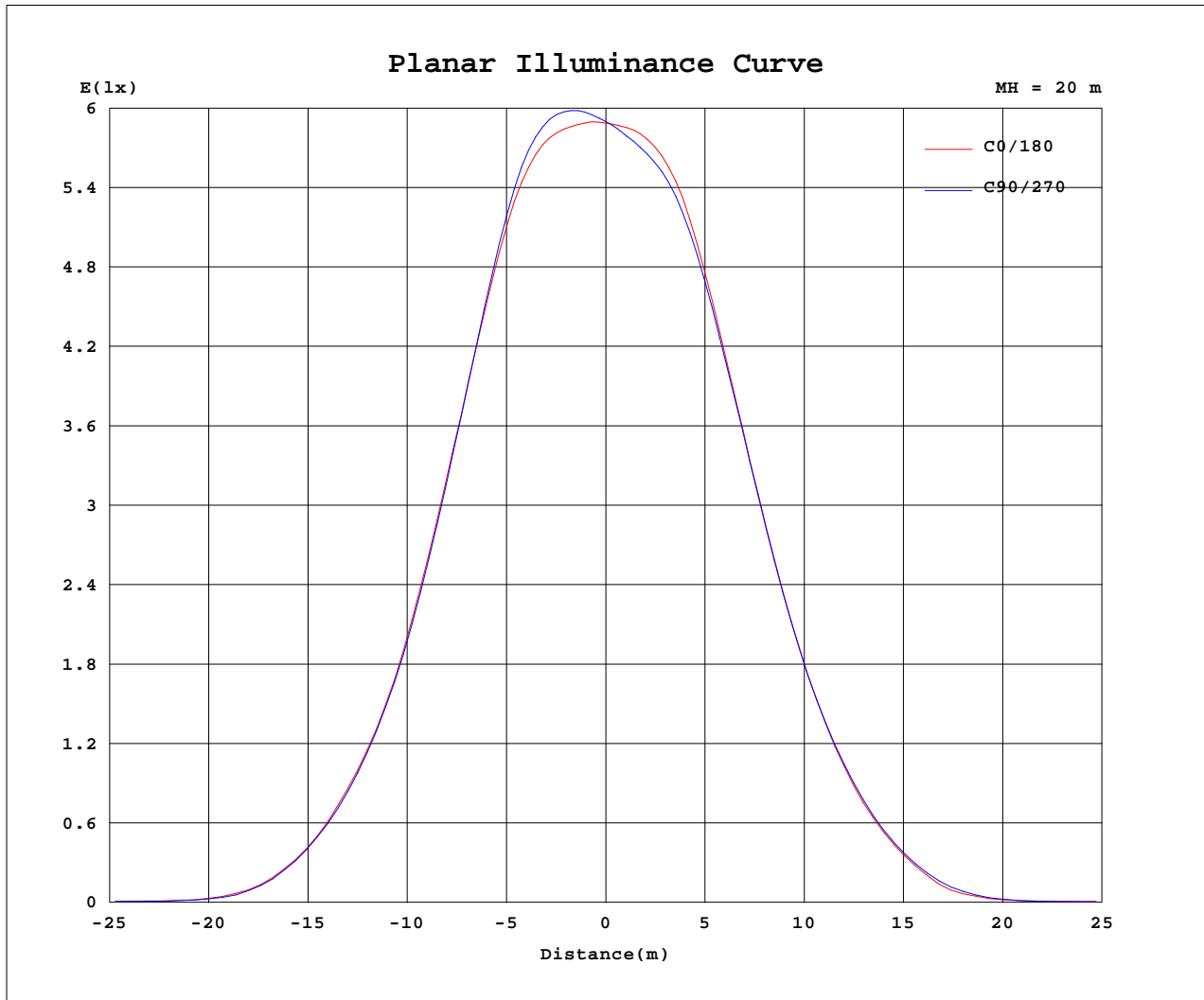
| AvgL           | cd/m2 |
|----------------|-------|
| L_0~180(65)av  | 1206  |
| L_0~180(75)av  | 304   |
| L_0~180(85)av  | 127   |
| L_90~270(65)av | 1195  |
| L_90~270(75)av | 332   |
| L_90~270(85)av | 125   |
| L_45(65)av     | 1185  |
| L_45(75)av     | 316   |
| L_45(85)av     | 82    |

Standard: GB/T 29293-2012

C Range: 0 - 360DEG  
C Interval: 30.0DEG  
Test Speed: HIGH  
Temperature:25.3℃  
Operators:zoe  
Test Date:2023-6-13

Range: 0 - 180DEG  
Interval: 1.0DEG  
Test System:EVERFINE GO-SPEX500\_V1 SYSTEM V2.00.461  
Humidity:65.0%  
Test Distance:3.160m [K=1.0000]  
Remarks: LAMP:BXRE-30H1000-A-83 Ra:97  
LENS:PM-0132C 60R  
DRIVER: TDI018NA050EF 500mA  
30minutes warm-up

## Planar Illuminance Curve



C Range: 0 - 360DEG  
 C Interval: 30.0DEG  
 Test Speed: HIGH  
 Temperature: 25.3 °C  
 Operators: zoe  
 Test Date: 2023-6-13

Range: 0 - 180DEG  
 Interval: 1.0DEG  
 Test System: EVERFINE GO-SPEX500\_V1 SYSTEM V2.00.461  
 Humidity: 65.0%  
 Test Distance: 3.160m [K=1.0000]  
 Remarks: LAMP: BXRE-30H1000-A-83 Ra: 97  
 LENS: PM-0132C 60R  
 DRIVER: TDI018NA050EF 500mA  
 30minutes warm-up



## LUMINOUS DISTRIBUTION INTENSITY DATA

|  |                  |                        |
|--|------------------|------------------------|
| Test:U:120.15V I:0.1706A P:20.246W PF:0.9863 Freq:59.98Hz<br>Lamp Flux:1877.8x1 lm |                  |                        |
| NAME: 2319.201-H3AM-500  | TYPE:            | WEIGHT:                |
| SPEC.: 3000K   | DIM.:            | SERIAL No.: 2306130767 |
| MFR.: RISE   | SUR.: 0.002826m2 | Shielding Angle:       |

Table--1

UNIT: cd

| C(DEG)<br>(DEG) | 0    | 30   | 60   | 90   | 120  | 150  | 180  | 210  | 240  | 270  | 300  | 330  |  |  |  |  |  |  |
|-----------------|------|------|------|------|------|------|------|------|------|------|------|------|--|--|--|--|--|--|
| 0               | 2360 | 2360 | 2360 | 2360 | 2360 | 2360 | 2360 | 2360 | 2360 | 2360 | 2360 | 2360 |  |  |  |  |  |  |
| 5               | 2375 | 2398 | 2416 | 2420 | 2412 | 2385 | 2353 | 2329 | 2310 | 2308 | 2324 | 2348 |  |  |  |  |  |  |
| 10              | 2370 | 2398 | 2413 | 2422 | 2408 | 2353 | 2285 | 2247 | 2224 | 2234 | 2274 | 2322 |  |  |  |  |  |  |
| 15              | 2184 | 2218 | 2202 | 2208 | 2180 | 2106 | 2021 | 1982 | 1966 | 1995 | 2059 | 2126 |  |  |  |  |  |  |
| 20              | 1782 | 1810 | 1768 | 1773 | 1738 | 1688 | 1609 | 1565 | 1568 | 1602 | 1672 | 1729 |  |  |  |  |  |  |
| 25              | 1281 | 1297 | 1261 | 1260 | 1222 | 1195 | 1147 | 1107 | 1116 | 1143 | 1204 | 1242 |  |  |  |  |  |  |
| 30              | 811  | 825  | 807  | 800  | 763  | 755  | 728  | 703  | 713  | 735  | 764  | 791  |  |  |  |  |  |  |
| 35              | 446  | 458  | 449  | 436  | 400  | 395  | 388  | 371  | 382  | 399  | 417  | 432  |  |  |  |  |  |  |
| 40              | 169  | 175  | 170  | 161  | 137  | 126  | 125  | 125  | 141  | 147  | 153  | 156  |  |  |  |  |  |  |
| 45              | 36.9 | 37.2 | 35.0 | 31.8 | 28.0 | 24.3 | 23.9 | 24.2 | 27.3 | 30.0 | 29.9 | 31.9 |  |  |  |  |  |  |
| 50              | 14.7 | 15.2 | 15.5 | 15.6 | 15.2 | 13.9 | 13.1 | 12.4 | 12.3 | 12.3 | 12.3 | 12.6 |  |  |  |  |  |  |
| 55              | 11.9 | 12.1 | 12.2 | 12.2 | 11.9 | 11.1 | 10.6 | 10.2 | 10.3 | 10.1 | 10.7 | 10.8 |  |  |  |  |  |  |
| 60              | 6.37 | 6.48 | 6.25 | 6.17 | 5.98 | 5.63 | 5.44 | 5.23 | 5.45 | 5.52 | 5.98 | 5.90 |  |  |  |  |  |  |
| 65              | 1.59 | 1.55 | 1.41 | 1.38 | 1.37 | 1.30 | 1.29 | 1.20 | 1.32 | 1.47 | 1.64 | 1.55 |  |  |  |  |  |  |
| 70              | 0.73 | 0.74 | 0.62 | 0.64 | 0.72 | 0.71 | 0.63 | 0.55 | 0.63 | 0.77 | 0.87 | 0.79 |  |  |  |  |  |  |
| 75              | 0.26 | 0.27 | 0.21 | 0.19 | 0.16 | 0.19 | 0.18 | 0.13 | 0.25 | 0.30 | 0.33 | 0.31 |  |  |  |  |  |  |
| 80              | 0.04 | 0.02 | 0.03 | 0.04 | 0.03 | 0.02 | 0.04 | 0.03 | 0.03 | 0.03 | 0.02 | 0.02 |  |  |  |  |  |  |
| 85              | 0.03 | 0.02 | 0.02 | 0.03 | 0.02 | 0.02 | 0.03 | 0.02 | 0.02 | 0.03 | 0.02 | 0.02 |  |  |  |  |  |  |
| 90              | 0.00 | 0.00 | 0.00 | 0.00 | 0.00 | 0.00 | 0.00 | 0.00 | 0.00 | 0.00 | 0.00 | 0.00 |  |  |  |  |  |  |
| 95              | 0.00 | 0.00 | 0.00 | 0.00 | 0.00 | 0.00 | 0.00 | 0.00 | 0.00 | 0.00 | 0.00 | 0.00 |  |  |  |  |  |  |
| 100             | 0.00 | 0.00 | 0.00 | 0.00 | 0.00 | 0.00 | 0.00 | 0.00 | 0.00 | 0.00 | 0.00 | 0.00 |  |  |  |  |  |  |
| 105             | 0.00 | 0.00 | 0.00 | 0.00 | 0.00 | 0.00 | 0.00 | 0.00 | 0.00 | 0.00 | 0.00 | 0.00 |  |  |  |  |  |  |
| 110             | 0.00 | 0.00 | 0.00 | 0.00 | 0.00 | 0.00 | 0.00 | 0.00 | 0.00 | 0.00 | 0.00 | 0.00 |  |  |  |  |  |  |
| 115             | 0.00 | 0.00 | 0.00 | 0.00 | 0.00 | 0.00 | 0.00 | 0.00 | 0.00 | 0.00 | 0.00 | 0.00 |  |  |  |  |  |  |
| 120             | 0.00 | 0.00 | 0.00 | 0.00 | 0.00 | 0.00 | 0.00 | 0.00 | 0.00 | 0.00 | 0.00 | 0.00 |  |  |  |  |  |  |
| 125             | 0.00 | 0.00 | 0.00 | 0.00 | 0.00 | 0.00 | 0.00 | 0.00 | 0.00 | 0.00 | 0.00 | 0.00 |  |  |  |  |  |  |
| 130             | 0.00 | 0.00 | 0.00 | 0.00 | 0.00 | 0.00 | 0.00 | 0.00 | 0.00 | 0.00 | 0.00 | 0.00 |  |  |  |  |  |  |
| 135             | 0.00 | 0.00 | 0.00 | 0.00 | 0.00 | 0.00 | 0.00 | 0.00 | 0.00 | 0.00 | 0.00 | 0.00 |  |  |  |  |  |  |
| 140             | 0.00 | 0.00 | 0.00 | 0.00 | 0.00 | 0.00 | 0.00 | 0.00 | 0.00 | 0.00 | 0.00 | 0.00 |  |  |  |  |  |  |
| 145             | 0.00 | 0.00 | 0.00 | 0.00 | 0.00 | 0.00 | 0.00 | 0.00 | 0.00 | 0.00 | 0.00 | 0.00 |  |  |  |  |  |  |
| 150             | 0.00 | 0.00 | 0.00 | 0.00 | 0.00 | 0.00 | 0.00 | 0.00 | 0.00 | 0.00 | 0.00 | 0.00 |  |  |  |  |  |  |
| 155             | 0.00 | 0.00 | 0.00 | 0.00 | 0.00 | 0.00 | 0.00 | 0.00 | 0.00 | 0.00 | 0.00 | 0.00 |  |  |  |  |  |  |
| 160             | 0.00 | 0.00 | 0.00 | 0.00 | 0.00 | 0.00 | 0.00 | 0.00 | 0.00 | 0.00 | 0.00 | 0.00 |  |  |  |  |  |  |
| 165             | 0.00 | 0.00 | 0.00 | 0.00 | 0.00 | 0.00 | 0.00 | 0.00 | 0.00 | 0.00 | 0.00 | 0.00 |  |  |  |  |  |  |
| 170             | 0.00 | 0.00 | 0.00 | 0.00 | 0.00 | 0.00 | 0.00 | 0.00 | 0.00 | 0.00 | 0.00 | 0.00 |  |  |  |  |  |  |
| 175             | 0.00 | 0.00 | 0.00 | 0.00 | 0.00 | 0.00 | 0.00 | 0.00 | 0.00 | 0.00 | 0.00 | 0.00 |  |  |  |  |  |  |
| 180             | 0.00 | 0.00 | 0.00 | 0.00 | 0.00 | 0.00 | 0.00 | 0.00 | 0.00 | 0.00 | 0.00 | 0.00 |  |  |  |  |  |  |

C Range: 0 - 360DEG  
C Interval: 30.0DEG  
Test Speed: HIGH  
Temperature:25.3℃  
Operators:zoe  
Test Date:2023-6-13

Range: 0 - 180DEG  
Interval: 1.0DEG  
Test System:EVERFINE GO-SPEX500\_V1 SYSTEM V2.00.461  
Humidity:65.0%  
Test Distance:3.160m [K=1.0000]  
Remarks: LAMP:BXRE-30H1000-A-83 Ra:97  
LENS:PM-0132C 60R  
DRIVER: TDI018NA050EF 500mA  
30minutes warm-up